



Above: Engineers use the Big Green Thing to fill baskets at the new Aidabaleten Company site

Right: Front strongpoint at the Home of the Engineers, Tonobibi

Below: Sappers lay a beachmat to assist with the offloading of the landing craft





Major Harry Jarvie, OC Engineers at stand to in Fort Balibo



Lance Corporal Berlee oversees the repairs to a bridge between Tonobibi and Memo



*Sergeant Patchett supervising
the construction of Route Monsta*

*Sapper Scott Hann, Sapper Peter George
and Corporal Sean McAlinden
preparing a new servicing pit at Tonobibi*



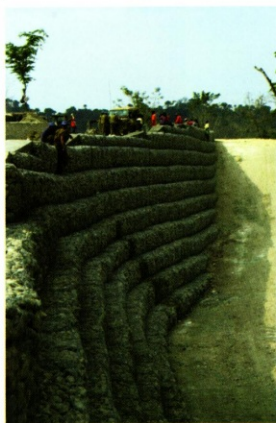
*The Sappers constructing a strong point
with the best view in Timor*



The Engineers use their excavator to fill the Flexmac baskets on the strongpoint at Junction Point Bravo



The TransPlants from Engineers move mountains to build roads.



The Gabion Basket wall at Critical Point 4, which also became known as the Great Wall of Timor



Engineers impersonating wombats as they prepare to revert the new Junction Point Memo accommodation building



Corporal Sean McAlinden puts the finishing touches on the Engineer Troop sign